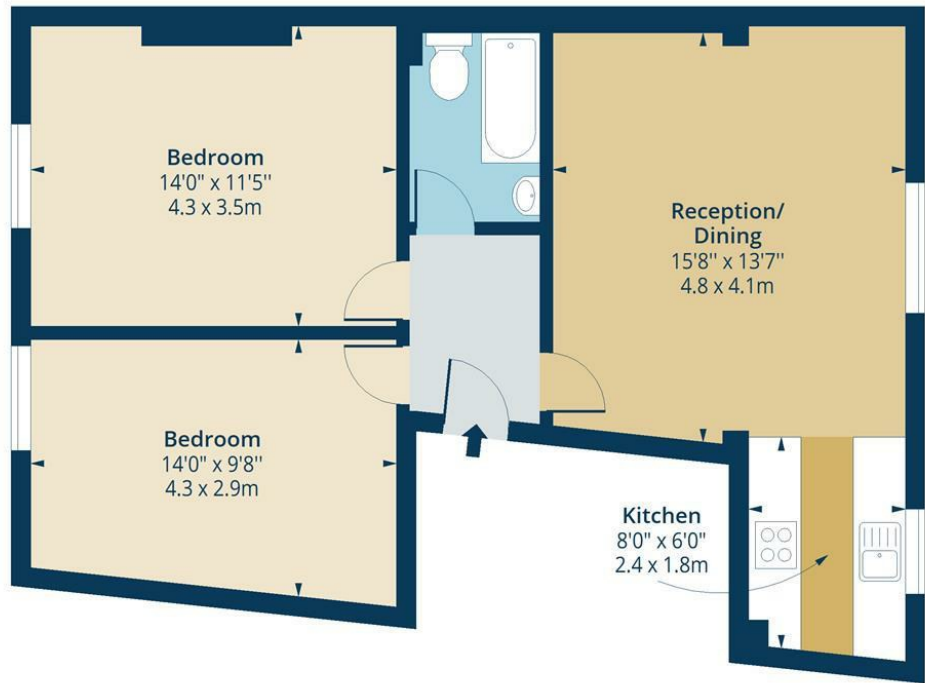


Navarino Road, E8
Approx. Gross Internal Area 641 Sq Ft - 59.55 Sq M



First Floor

Floor Area 641 Sq Ft - 59.55 Sq M



Measured according to RICS IPMS2. Floor plan is for illustrative purposes only and is not to scale. Every attempt has been made to ensure the accuracy of the floor plan shown, however all measurements, fixtures, fittings and data shown are an approximate interpretation for illustrative purposes only. 1 sq m = 10.76 sq feet.

lpaplus.com

Date: 8/1/2024

Whilst every attempt has been made to ensure the accuracy of the floor plan contained here, measurements of doors, windows, rooms and any other items are approximate and no responsibility is taken for any error, omission or mis-statement. This plan is for illustrative purposes only and should be used as such by any prospective purchaser. The services, systems and appliances shown have not been tested and no guarantee as to their operability or efficiency can be given.



£2,600

A bright and airy flat set on the first floor of this imposing four storey end of terrace Victorian house. Internally the flat has been well looked after and offers two double bedrooms (one currently being used as a sitting room), large reception, large sash windows and high ceilings.

Navarino Road is a popular tree-lined residential road located within a couple minutes walk of London Fields and is also within walking distance of local shops and transport facilities including Hackney Central Overground Station with easy access into Liverpool Street. The flat is offered unfurnished with white goods.



- TWO DOUBLE BEDROOMS
- MOMENTS FROM LONDON FIELDS
- SHORT WALK TO HACKNEY CENTRAL

